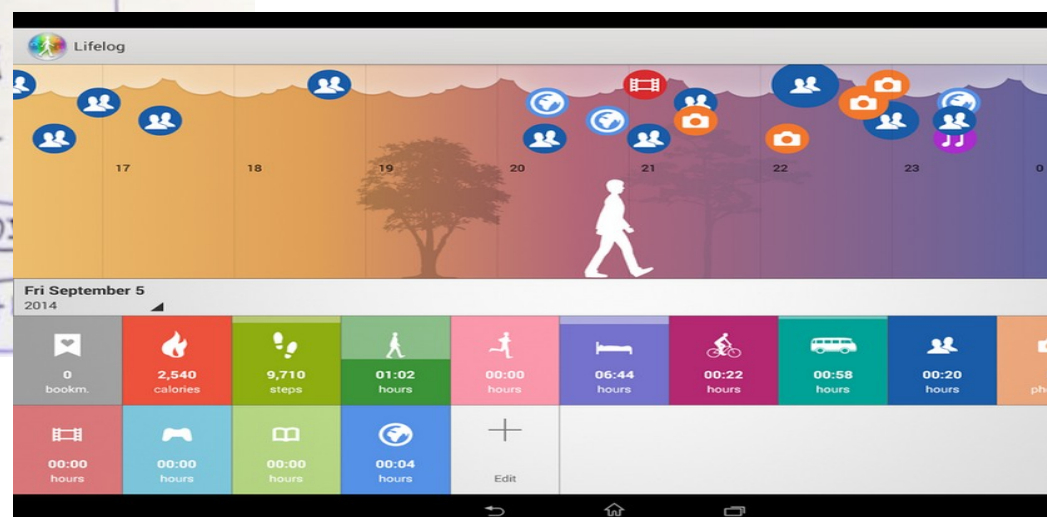
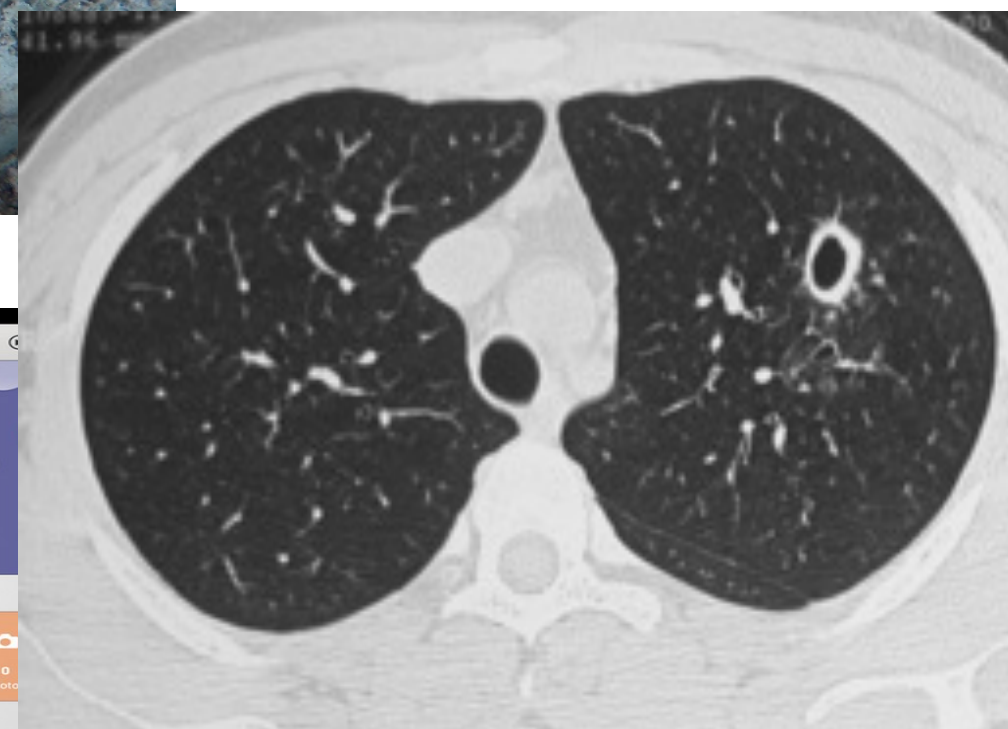
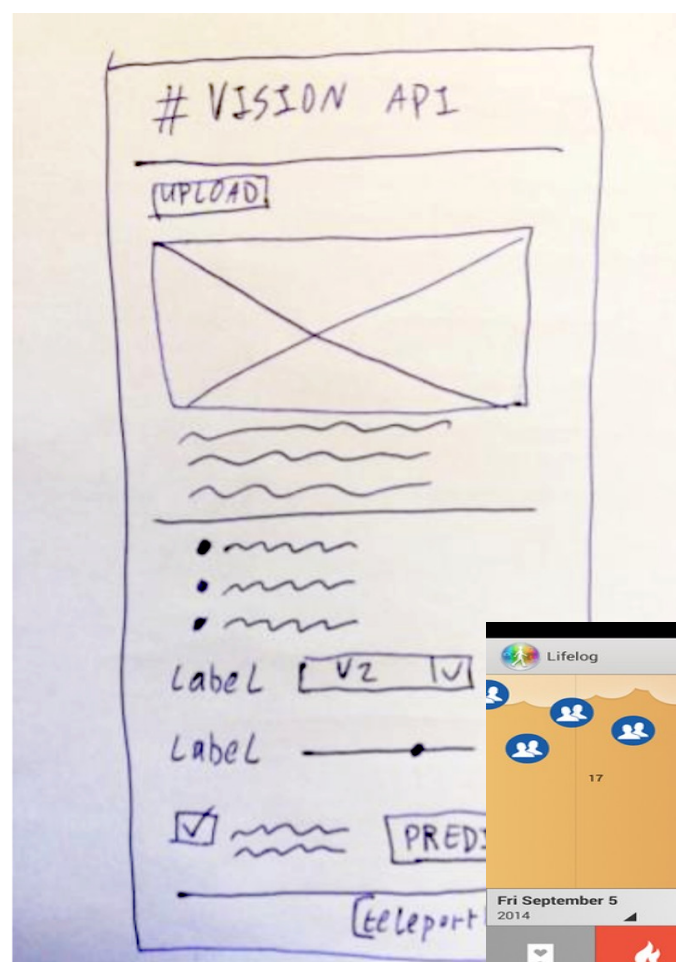


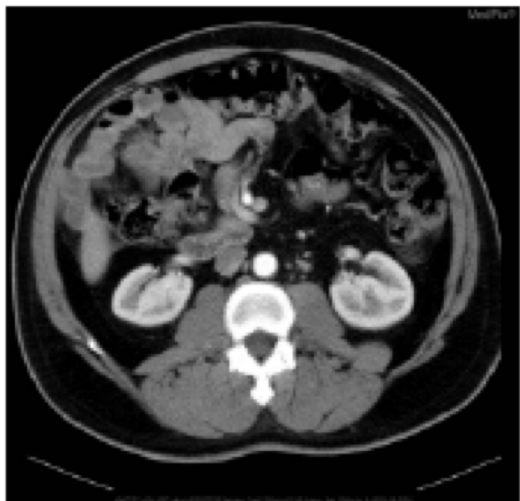
ImageCLEF 2020



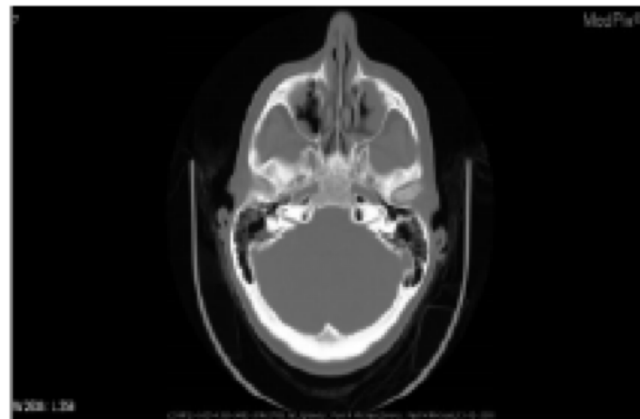
Tasks in ImageCLEF 2020

- Medical
- Lifelog
- Coral reef
- DrawnUI

- Goal:** answering the question based on the visual image content



(1) Q: is this a contrast or non-contrast ct? A: contrast



(2) Q: which plane is the image shown in? A: axial

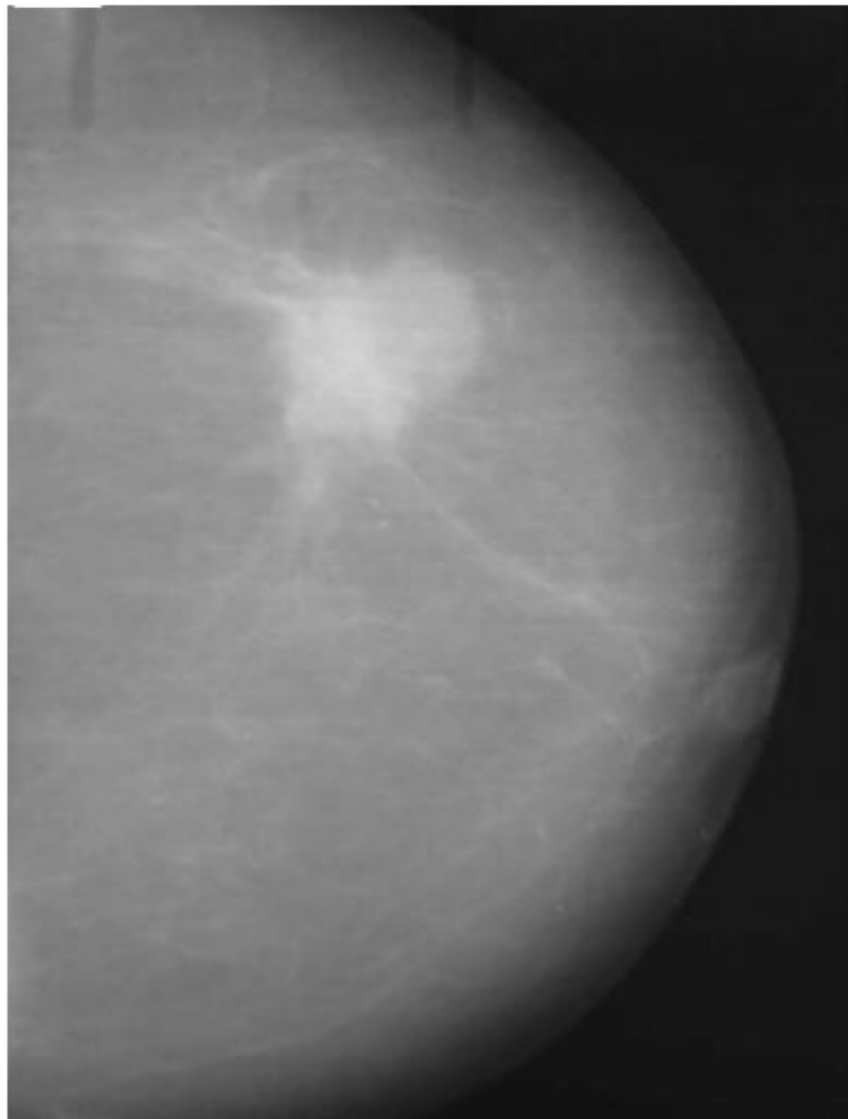


(3) Q: what is abnormal in the gastrointestinal image? A: gastric volvulus (organoaxial)



(4) Q: which organ system is shown in the ct scan? A: lung, mediastinum, pleura

- Goal:** concept detection

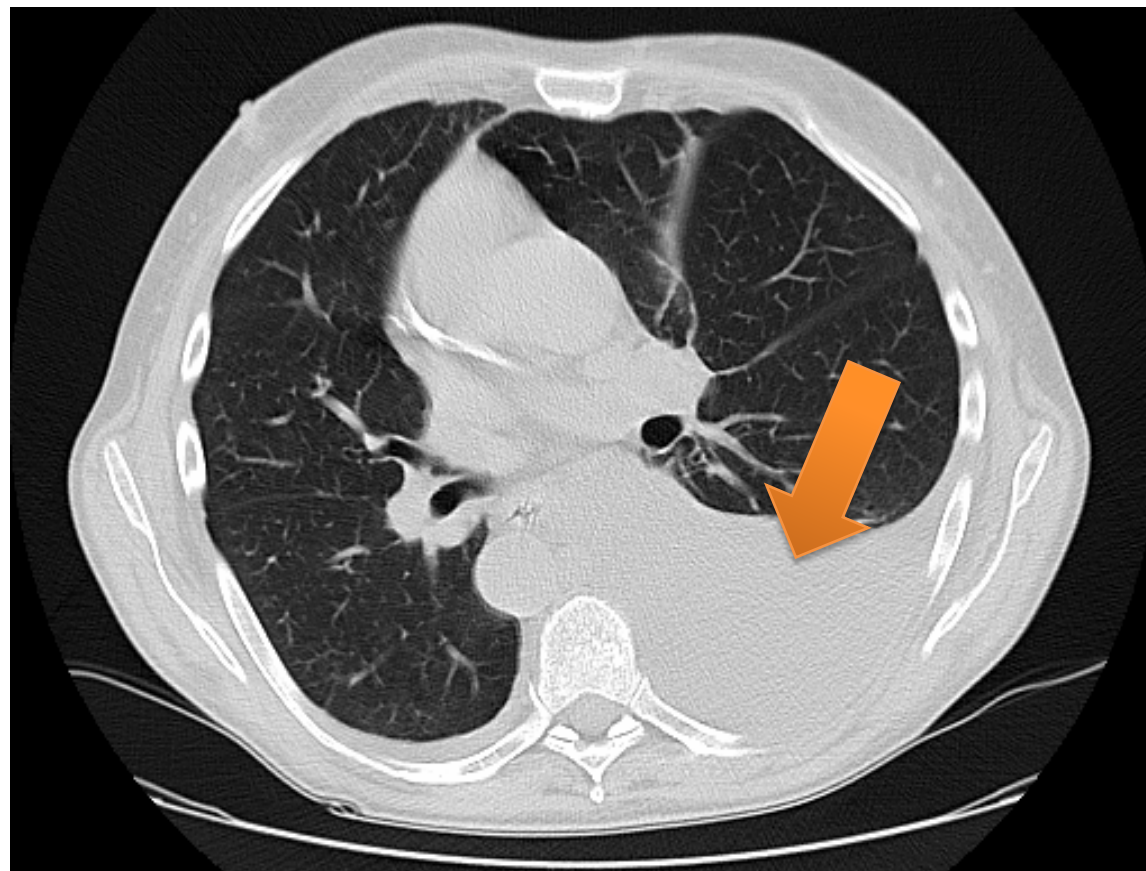


CC BY [Rekhi et al. (2007)]

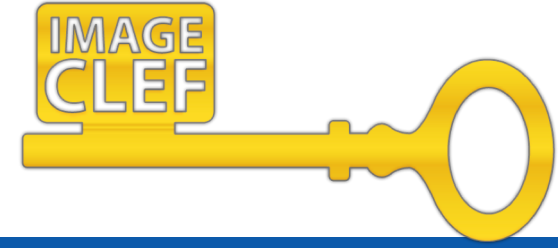
C0006141: Breast
C0024671: Mammography
C0006826: Malignant Neoplasms
C0772294: Epinastine Hydrochloride
C0242114: Suspicion
C4282132: Malignancy
C0221198: Lesion

Medical: Tuberculosis

- **Goal:** CT report generation
- CT of patients with Tuberculosis (TB) + related metadata



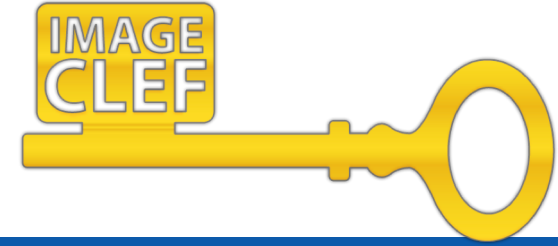
Lifelog task



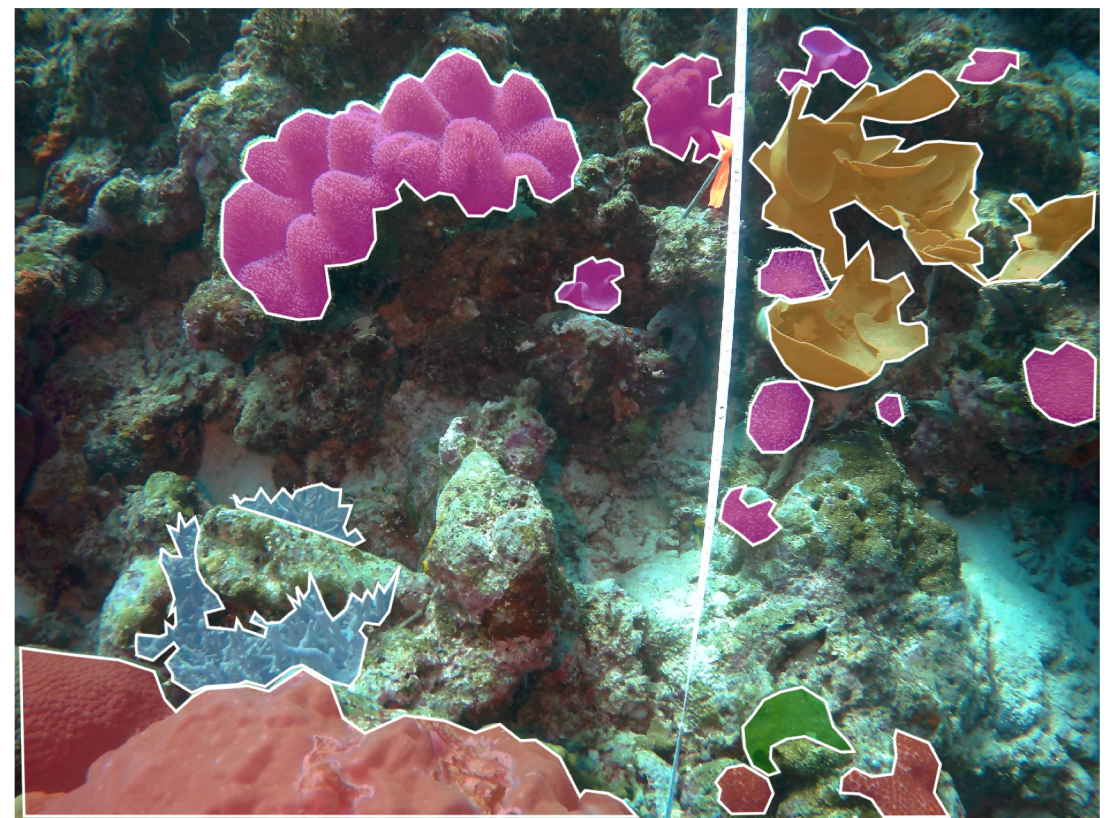
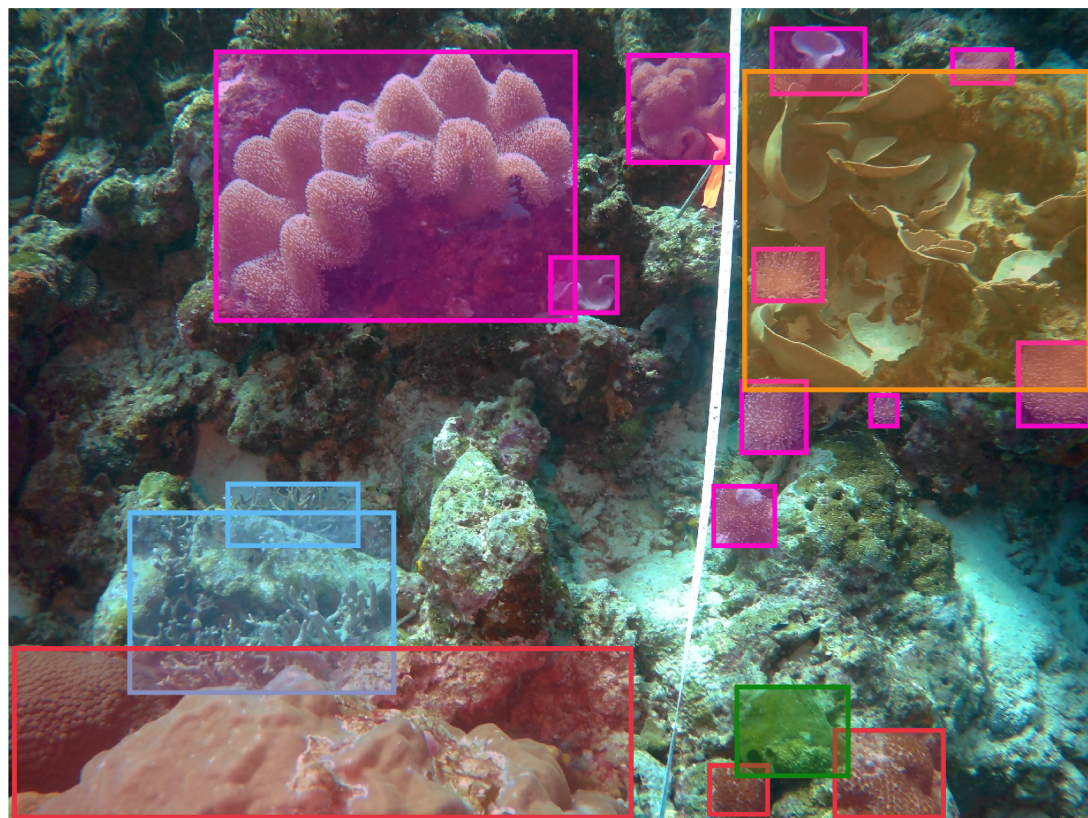
- **Goal:** lifelogging data categorization, retrieval and summarization



Coral Reef

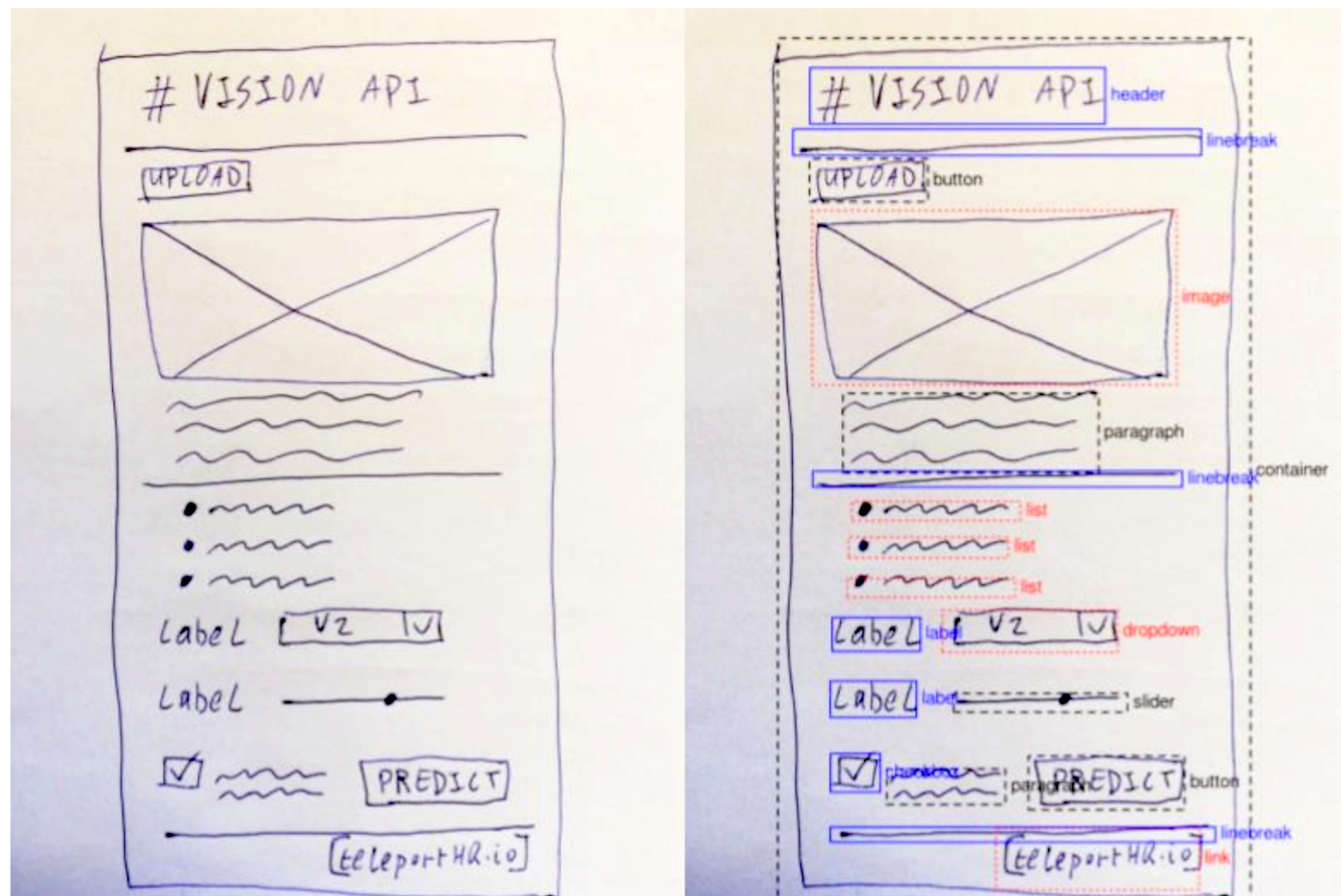


- **Goal:** segment and label a collection of coral reef images



DrawnUI

- **Goal:** recognise hand drawn objects representing website UIs, which will be further translated into automatic website code.



Thank you!

<https://www.imageclef.org/2020/>